



RC:810809



CONTACT US:

- ❖ Head Office: Plot 3, Opete road opposite Plantation city estate Otokutu, Ughelli South LGA, Near Warri, Delta State
- ❖ Branch Office: Plot 7, Eyangho street, off Isaiah Road, Ubeji, Warri Delta State.
- ❖ Website: www.jollyenergyfleet.com
- ❖ Emails: info@jollyenergyfleet.com, jollyenergyfleet01@gmail.com
- ❖ Phone: +234 8080800002, +234852111033



INTRODUCTION

The Nigerian business environment seem to be changing due to the uncertainty that surround market activities across the globe, regardless of these changes the region economic evolution remains positive and viable for investment, hence the need for stakeholders' quest for quality service and access to superior product and the desirous necessity for value, shall continue to be priority for client and customers across board.

Established in 2009 as an engineering and trading firm, Jolly Energy Fleet's sole aim is in ensuring our esteem clients get their desired output, with respect to our range of specialty in providing International Oil Company (IOCs) and National Oil Company (NOCs) support services like personnel onboarding, facility management, building construction, fabrication, camp installation, logistics, marine services, civil security, as well as procurement, and commissioning of specialized projects. Over time, our organization continue to remain resilient, nevertheless, we have included in our range of services, sales, distribution, and supply of petroleum products e.g., lubricants, domestic and industrial gas of different types, AGO, DPK and petrol to mention but a few for business to business (B2B) and business to customers (B2C) with outlets spread across Delta State and environs. Our success is strongly based on partnerships, local and international. This flexibility allows us to service a wide variety of customers.

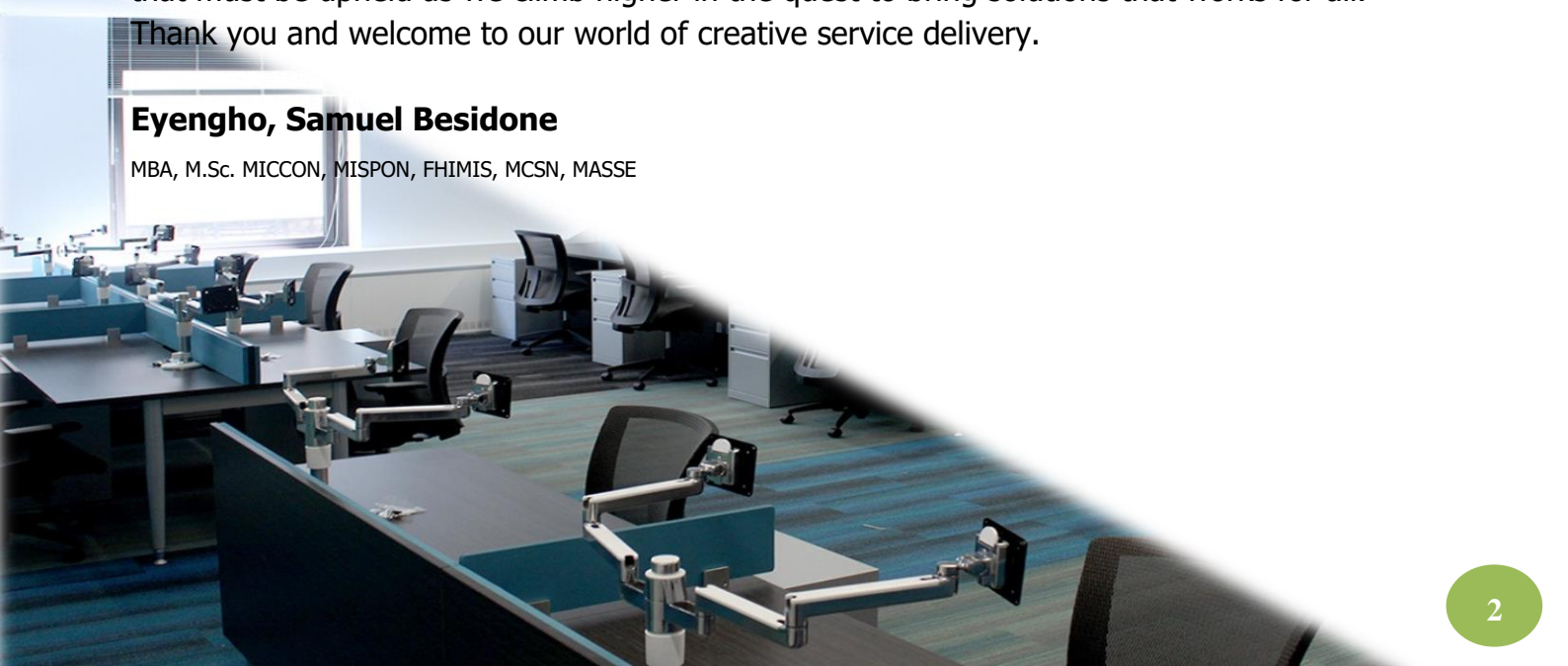
At Jolly energy fleet, our team of smart, creative, and innovative members of staff pride themselves as the most valued and critical resource. We ensure our team of personnel interest comes first and the reason our business remains sustainable can be seen in the list of executed projects just as in the face of uncertainties created by the Covid-19 and climate change which tend to be ravaging the global economy.

As we continually thank and appreciate our most esteemed client and customer for the usual patronage and support, we hope that this unique, most adorable privilege accorded us to deliver quality services will be maintained. Whilst doing our best to keep client and customers satisfied, in anticipation for others that will emerge in the days ahead. The need to radically take advantage of the available and scarce resources in delivering on our promised improvement, development, partnership and satisfaction, for our cherished client and customer, is a priority that must be upheld as we climb higher in the quest to bring solutions that works for all.

Thank you and welcome to our world of creative service delivery.

Eyengho, Samuel Besidone

MBA, M.Sc. MICCON, MISPON, FHIMIS, MCSN, MASSE



CORPORATE SUMMARY



SUMMARY OF OUR CORE SERVICES

Sales Distribution and Supplies of Petroleum Products

❖ Data and Measurement

- Ullage
- Fiscalization

❖ Lubricants

- Engine Oil
- Grease
- Hydraulic
- Transmission Oil

• Domestic and Industrial Gas

- Butene
- Propane
- AGO
- DPK
- Petrol



Onshore Environmental/Waste Management

- Office and Domestic Waste Management (Non-Hazardous)

Rehabilitation/Upgrade/Fabrication Works

- **Civil Works**
 - Minor Civil
- **Mechanical Works**
 - Minor Metal Fabrication



Protocol & logistics

- ❖ Car / Vehicle Hire and Leasing
- ❖ Vehicle / Equipment Documentation

Environmental Management (Consulting)

- ❖ Fumigation
- ❖ Weed Control
- ❖ Industrial Cleaning

Hospitality

- ❖ Onshore Catering and other related services
- ❖ Lease of Office Accommodation/Guest House
- ❖ Offshore Laundry Services
- ❖ Offshore Catering, Housekeeping, and other related services

Special Transportation

- ❖ Sea Transportation
- ❖ Offshore Operation Support Services (e. g. Marine Security & Escort, Mooring Services, House Boats, Barges.)



Supply of Building Construction Materials

- ❖ Fine and sharp sand
- ❖ Reinforcement Rod of various sizes (8mm, 10mm, 12mm, 16mm, 20mm, 25mm)
- ❖ Aggregate/Gravel
- ❖ Cement
- ❖ Other Building Materials



Consultancy

- ❖ Security Services (Security equipment/devices, Pipeline Surveillance, Armed guards etc.)
- ❖ Training/Manpower Development (Basic Safety training, Software/IT, Engineering, Finance/Accounts, Management/Admin., Soft Skills Training)
- ❖ Nigerian Manpower Supply (Nigerian Professionals only)
- ❖ Horticulture/Landscaping

Heavy Duty Equipment Supplies, Installation and Maintenance

- ❖ Excavators
- ❖ Swamp Buggie



OUR MISSION

We strive to make every effort count by ensuring business continuity, whilst promoting growth and excellent services that bridge the gap in customers' expectation.

OUR VISION

A performing organization of preference, advancing global best practices through synergy with quality, affordable, and innovative solutions that prioritize customers satisfaction.

OUR CORE VALUES

❖ **JUDICIOUS**

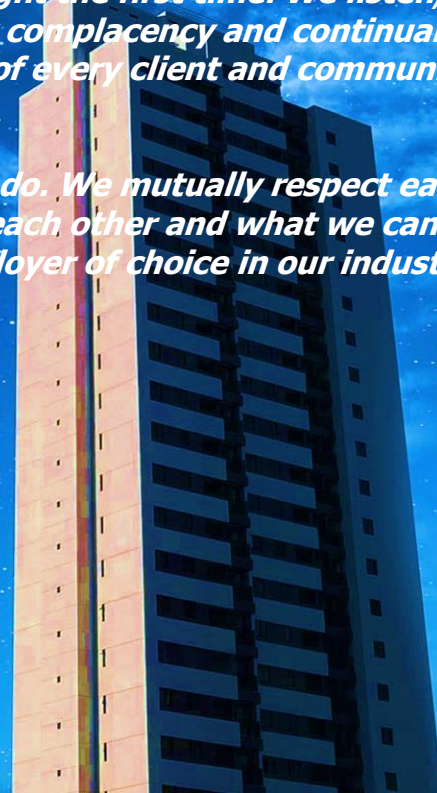
Honesty, truthfulness, and sincerity are all values we hold at the forefront. We inspire trust in each other and our clients by saying what we mean, matching our behaviors to our words, and taking responsibility for our actions. We are always fair and ethical even in the most difficult situations.

❖ **GOAL ORIENTED**

We are goal oriented as we are passionate about meeting the desired goal of our client and doing our work right the first time. We listen, learn, and seek out the best ideas. We attack complacency and continually improve while delivering value in the eyes of every client and community we serve.

❖ **TEAM WORK**

We are passionate about what we do. We mutually respect each other's work and opinions. We believe in each other and what we can accomplish together. We aspire to be the employer of choice in our industry.





Revision NO: 004
Date: 15.01.2021
Policy No: JEF-QMS-POL-004

QHSE POLICY

JOLLY ENERGY FLEET LIMITED policy describes the principles governing all operations and activities conducted by Jolly Energy Fleet in its businesses and how employees conduct themselves in support of this quality, health, safety, health, and environmental policy.

Our policy applies to all Jolly Fleet businesses, employees, and facilities worldwide.

Key Principles

Jolly Energy Fleet commitment is to satisfy fully, and exceed the expectations of our clients by setting and exceeding the highest standards possible for the provision of Quality Products, Innovative Technical Expertise and Quality of Service in a safe manner and with environmental responsibility.

- Prevention of injury or ill health to people, and pollution to the environment.
- Compliance with all applicable legal and other requirements.
- Continual improvement in quality, environmental, health and safety performance with the ultimate goal of zero complaints, zero injuries and zero emissions of toxic and hazardous materials.
- Design and operation of our plants and facilities in a manner that protects the environment and the health and safety of our employees and the public.
- Utilization of the standard operating procedures (SOPs) designed at Jolly Energy Fleet and ensuring we exceed the expectations of our esteem clients.
- Encouraging opportunities for continual improvement in the effectiveness of Quality, Occupational Health, Safety and Environmental systems in all areas of our business management.
- Effective communication of this policy to all employees and Sub-contractors of JOLLY FLEET
- Conducting an annual management review to monitor the overall effectiveness and suitability of our Integrated Management System, including this policy, establishing and reviewing of Objectives, and agreeing appropriate changes with senior management.

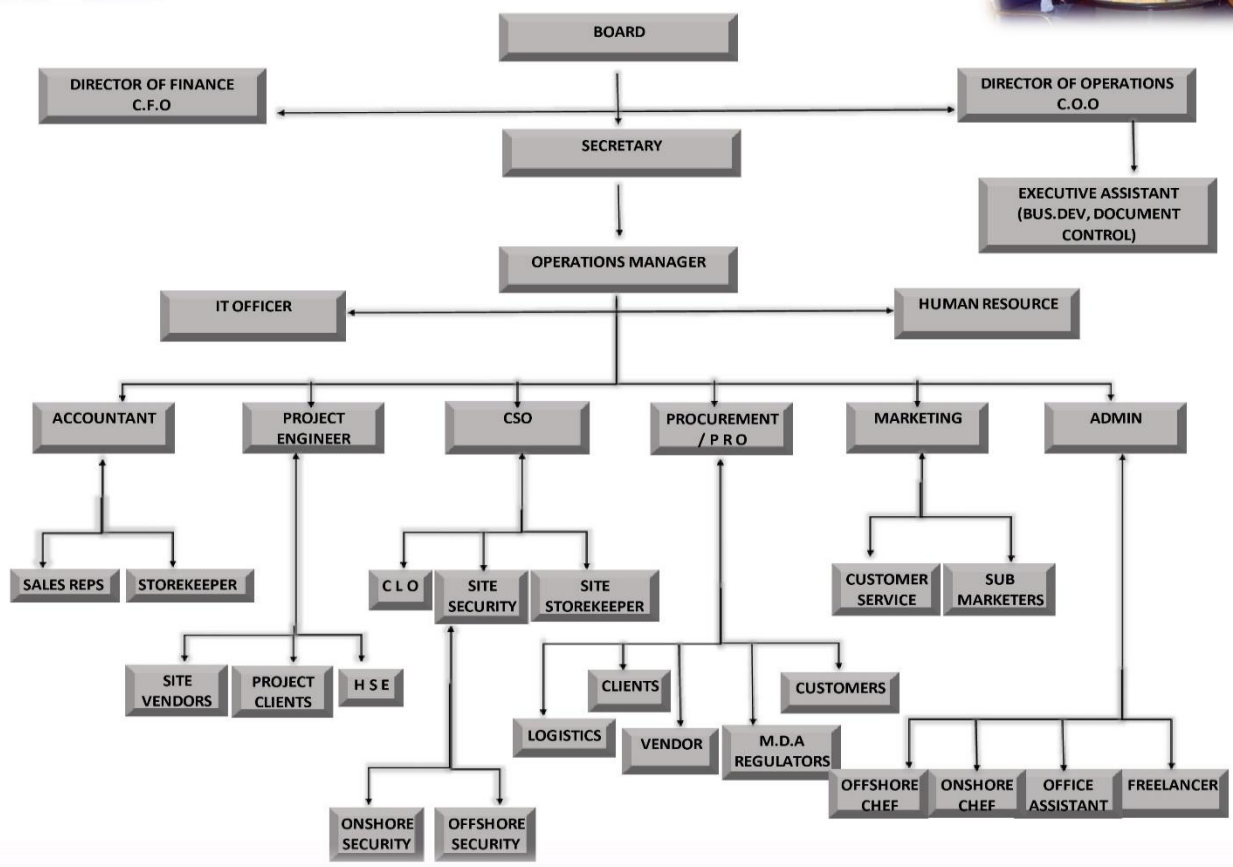
This policy will be implemented through the systematic application of good engineering practice and quality management to all activities, together with the active involvement and conscious improvement of all staff and contractors.

The above QHSE statement, a copy of which is available to interested parties including the general public, is made on the authority of the Jolly Energy Fleet Management.

Signed by; (Managing Director)
(Original copy maintained by Jolly Energy Fleet Custodian)



CORPORATE ORGANISATION CHART



SUMMARY OF OUR CORE SERVICE AREAS

1. Construction and Fabrication

❖ Mechanical (Designs, Fabrication and Procurement)

- Structural, Arc and Argon Welding works
- Pipe fittings
- Pipe Laying
- Storage Tank Construction
- Workshop Fabrication
- Grating installation

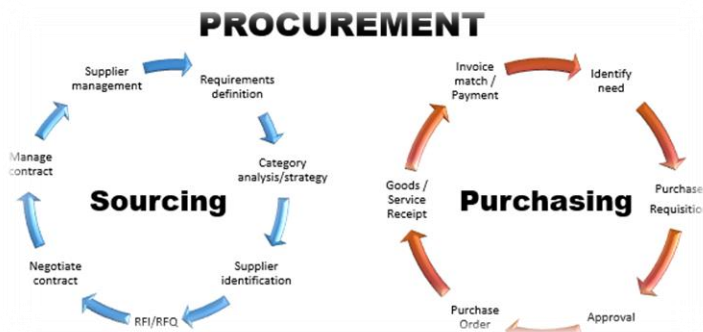
❖ Civil works (Construction)

- Supply of Gravel and Sand
- Supply of cement
- Reinforcement Rods of different sizes



2. Protocols and Logistics

- ❖ Car / Vehicle Hire and Leasing
- ❖ Vehicle / Equipment Documentation
- ❖ Labor Supply



3. Environmental Management

- ❖ Fumigation
- ❖ Weed Control
- ❖ Industrial Cleaning



3. Waste Management

- ❖ Solid waste management
- ❖ Office and Domestic Waste Management (Non-Hazardous)
- ❖ Waste Transportation and logistics services



4. Camp and Facility Management

- ❖ Construction and Fabrication of Porta-Cabin / Site Accommodation
- ❖ Site Preparation
- ❖ Camp Installation / Fabrication
- ❖ Labor Supply





PROJECT MANAGEMENT

We manage the various phases of the project acting as an extension of the Owners' organization.

Depending upon the project requirements, we establish the procedure for carrying out architectural/Engineering designs for all our construction project.

We set the strategy and manage the activities of the A/E and Main Contractor covering all phases from pre-construction through completion and act as the single point of contact with the Owner.

We have highlighted our project management capability through;

- ❖ Resources Allocation and Management
- ❖ Managing the Project unknown (Risk and Opportunity)
- ❖ Stakeholders Management (Community Management Consultancy)
- ❖ Project Procurement and Contract Administration
- ❖ Project Quality Management
- ❖ Project Management Office and Project Portfolio
- ❖ Project Monitoring and Control
- ❖ Conflict of Interest and Issue of Business Ethics
- ❖ Project Close Out and Termination



EXECUTED PROJECTS

Below is a list of contracts undertaken by **JOLLY ENERGY FLEET LIMITED**

NOTE: This list is in exhaustive

S/N	JOB DISCRIPTION	STATUS	YEAR OF EXECUTION
1.	PROCUREMENT OF DUST BLOCK, SHARP SAND, AND GRANITE FOR THE OKERENKOKO RENOVATION AND NEW TOWN PROJECT	COMPLETED	2010
2.	CONSTRUCTION OF PERIMETER FENCE FOR PROPOSED 911 PLAZA	COMPLETED	2010
3.	CONSTRUCTION OF PERIMETER FENCE AT 911 EVENT CENTER UGBUWAGWE, WARRI	COMPLETED	2011
4.	CONSTRUCTION OF DRAINAGE AT 911 EVENT CENTER UGBUWAGWE, WARRI	COMPLETED	2011
5.	CONSTRUCTION OF DRAINAGE AT IDIMI JAKPA ROAD OKERE, WARRI	COMPLETED	2011
6.	BUILDING OF A SECURITY POST AT SWISS COTTAGE ROAD EGBOKODO- UBEJI, WARRI	COMPLETED	2012
7.	RENOVATION OF THE AREA COMMANDER'S QUARTERS, WARRI	COMPLETED	2012
8.	CONSTRUCTION OF MATERNITY WARD AT UGONO PHC, UGHELLI (MDG's PROJECT)	COMPLETED	2012
9.	CONSTRUCTION OF BRIDGE GARDEN PARK UNDER THE OGUNU FLY OVER BRIDGE (DTSG PROJECT)	COMPLETED	2013
10	PROVISION OF UTILITY VEHICLES TO DELTA AFRIK ENGINEERING LTD. GRIP CONSTRUCTION PROJECT ESCRAVOS.	COMPLETED	2013
11	SUPPLY OF PETROLUEM PRODUCT TO DELTAAAFRIK ENGINEERING LTD. GRIP CONSTRUCTION PROJECT ESCRAVOS.	COMPLETED	2013
12	SUPPLY OF PETROLUEM PRODUCT TO FUGRO NIGERIA LTD, GRIP CONSTRUCTION PROJECT ESCRAVOS.	COMPLETED	2013
13	SUPPLY OF PPE'S AND MANPOWER TO FUGRO NIGERIA LTD GRIP CONSTRUCTION PROJECT ESCRAVOS.	COMPLETED	2013

14	CONSTRUCTION OF EKPAN FLYOVER LINK ROAD, AWHALPRO LAYOUT TO LINK CELESTIAL ROAD, PHASE II, WARRI LOCAL GOVT. AREA (NDDC PROJECT)	COMPLETED	2014
15	CANALIZATION OF 1KM DDPA CANAL – PHASE 2(LOT1) UVWIE LOCAL GOVT. AREA (NDDC PROJECT)	COMPLETED	2014
16	CHEVRON ESCRAVOS EXPORT SYSTEM PROJECT (EESP) COMMUNITY AFFAIR MANAGEMENT CONSULTANT ENGAGEMENT (DELTATEK ENGINEERING LIMITED)	COMPLETED	2018
17	JETTY PREPARATION/FUMIGATION AT ESCRAVOS ENVIRONS POWER SUPPLY PROJECT SITE	COMPLETED	2020
18	BUSH CLEARING OF EEPSP PROJECT SITE AT NNPC-NPSC YARD, UGBORODO, ESCRAVOS.	COMPLETED	2020
19	TRANSPORTATION/LOGISTICS FOR 4 UNITS COMPLETED PORTA CABINS FROM WARRI TO ESCRAVOS. ESCRAVOS ENVIRONS POWER SUPPLY PROJECT SITE	COMPLETED	2020
20	PROVISION OF WATER TRANSPORTATION SERVICE AT ESCRAVOS ENVIRONS POWER SUPPLY PROJECT SITE	ONGOING	2020
21	SUPPLY OF 4 UNITS OF 40FT CONTAINERS (CARAVAN) INCLUDING TRANSPORTATION TO ESCRAVOS ENVIRONS POWER SUPPLY PROJECT SITE. DELTA STATE	COMPLETED	2020
22	CONSTRUCTION OF 2 UNITS GATE HOUSE BUILDINGS FOR GAS FIRED 20MW POWER PLANT FOR ESCRAVOS ENVIRONS POWER SUPPLY PROJECT SITE.	COMPLETED	2020
23	SUPPLY AND DELIVERY OF 10 UNITS FINISHED PORTA CABINS/MODULAR CABIN AT ESCRAVOS ENVIRONS POWER SUPPLY PROJECT SITE	ONGOING	2020
24	CONCRETE JETTY CONSTRUCTION AT UBEJI SITE	COMPLETED	2020
25	PROVISION OF CIVIL SECURITY PERSONNEL FOR MANNING OF ESCRAVOS ENVIRONS POWER SUPPLY PROJECT SITE.	ONGOING	2021



PHOTO GALARY OF OUR EXECUTED PROJECTS



Personnel at Work in the Block Industry Site



Storage of Granite in a Barge for Supply at Escravos

PROJECT: Procurement of Dust Block, Sharp Sand and Granite for Okerenkoko Renovation and New Project (Year 2010)



Form works on Fence



Final Stage of Fencing



Drainage Slab Coverage



Bill Board for Drainage and Fencing

PROJECT: Construction of Perimeter Fence for Proposed 911 Plaza (Year 2011)



Gazable Seat Out at the Delta Bridge Garden Park



Lintel level of Delta Bridge Garden Park Eatery

PROJECT: Construction of Bridge Gardern Park Under the Ogunu Fly Over Bridge (Year 2013)



Fleet of boats for commercial services.



Boat for Commecial Transportation Services



Passenger on Board Ready to be Transported to Escravos



Closed Roof Boat

PROJECT: Provision of Water Transportation Services (Year 2020)



Lifting of Container (caravan) into the Flatbed



Loading of Flatbed with caravan to the Barge

PROJECT: Supply of 40fts Container (Caravan) including Transportation to Power Project Escravos, Delta State (Year 2020)



Land Clearing and preparation of Site



Clearing of Existing structures and Materials from Proposed Site for Construction



Transportation of abandoned caravan from the EEPSP site to the dump site using the self-loader



Survey team checking for the ground level.

PROJECT: Bush Clearing of EEPSP Project Site at NNPC-NPSC Yard, Ugorodo, Escravos (Year 2020).



Setting Out and Excavation trench for Gate House



Blinding and Column Setting



Casted Column Base Ready to be Sand Filled



Completed Gate House

PROJECT: Construction of Gate House Building for Gas Fired 20mw Power Plant for Escravos Project

LIVING THE CONSTRUCTION DREAM

OUR PARTNERS:

TOMBA RESOURCES NIG. LIMITED

A & E Petroleum



OUR CLIENTS:



Deltatek Engineering Limited



Income Electrix Limited

The Number One African-Owned Power Company



NDDC

*Niger Delta Development Commission
...Determined To Make A Difference*



Tomba Resources Nigeria Limited